

NORTHAMPTON BOROUGH COUNCIL

[Text only](#) | [Accessibility](#) | [Site map](#) | [Advanced Search](#)

Search

Monday 11 June 2012

[» Home](#) | [Information](#) | [Current petitions](#) | [Petition](#)

ePetition details

Categories in Council, government and democracy

[Calendar](#)

[What's new](#)

[Search](#)

[Committees](#)

[Decisions including Member Decisions](#)

Moulton Leys CGR

[Meetings](#)

[Forward Plans](#)

[Councillors](#)

[Library](#)

[ePetitions](#)

[Subscribe to updates](#)

- o [Browse all current petitions](#)

We the undersigned petition the council to support the creation of a parish council in the Moulton Leys area of Boothville Ward as identified on the attached map on the Community Governance Review page of the Northampton Borough Council website, and would like Northampton Borough Council to consult on this proposal in its review of community governance in the town.

This petition has been set up by Cllr Jamie Lane and Cllr Mike Hallam

This ePetition ran from 27/02/2012 to 18/05/2012 and has now finished.

7 people signed this ePetition.

Council response

When we have received the threshold number of signatures, Council will consider approving the proposal to go to a referenda in November 2012.

Threshold 250

Information on Council, government and democracy

[6 ways to search this website](#)

[Council - general information](#)

- o [Related FAQs](#)
- o [Related Forms](#)
- o [Related Downloads](#)

- o [Print this page](#)
- o [Email this to a friend](#)

[Contact the Council](#)

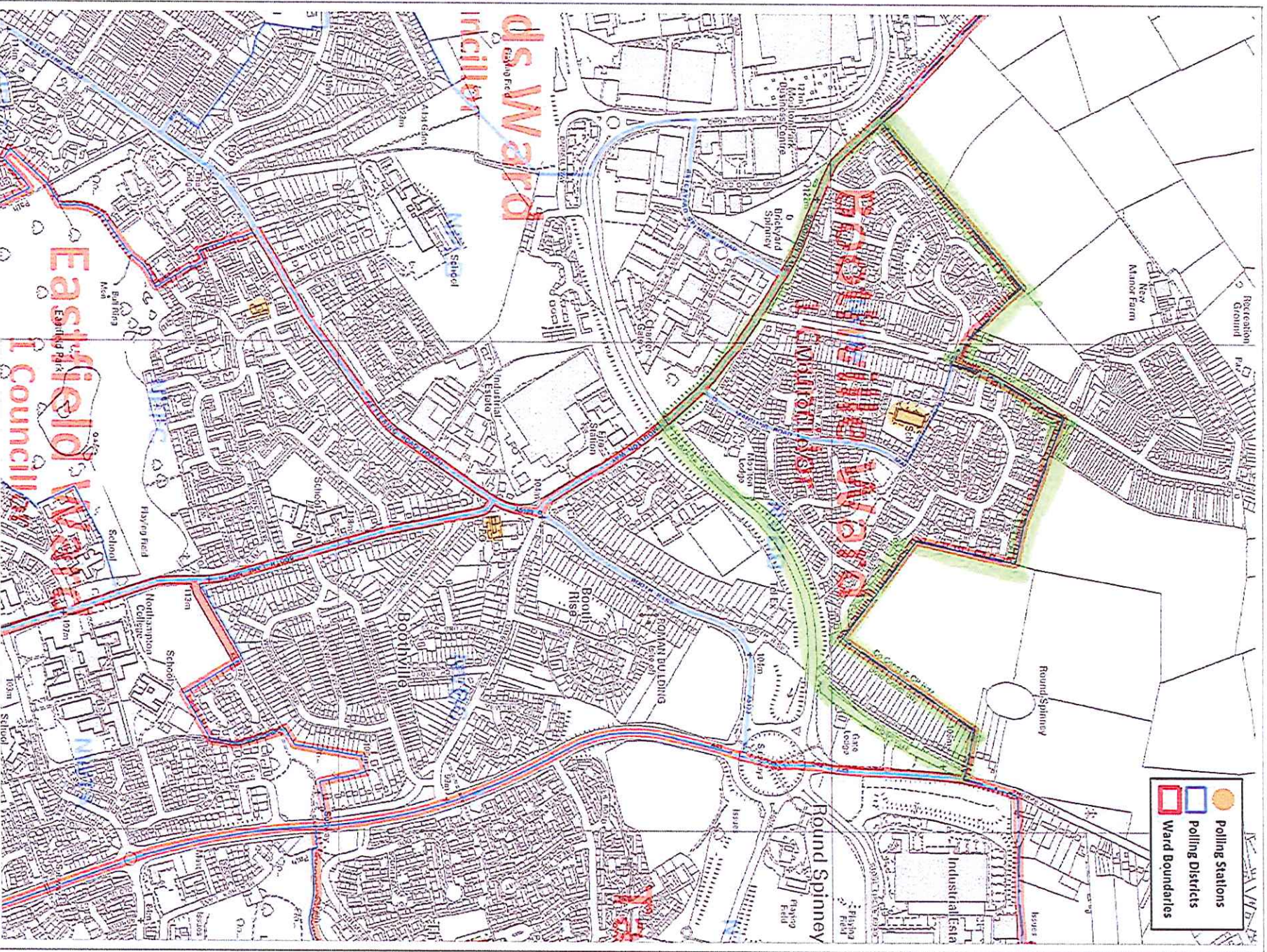
Email: enquiries@northampton.gov.uk

Telephone: 01604 837837

Use our **feedback form** or find key **contact details** and numbers.

All content © 2005 Northampton Borough Council | [Feedback](#)

Northampton Borough Council, The Guildhall, St Giles Square, Northampton NN1 1DE



Name: M Dunne
 Date: 29th September 2010
 Scale: A1S
 Dept: GIS Development Unit
 Project: Ward Map

Title
Boothville Ward
 Produced from the 2010 Ordnance Survey mapping with the permission of the Controller of Her Majesty's Stationery Office. © Crown Copyright
 Unauthorised reproduction infringes Crown Copyright and may lead to prosecution or civil proceedings. Licence number: 100019555

[Text only](#) | [Accessibility](#) | [Site map](#) | [Advanced Search](#)

Search

Monday 11 June 2012

» [Home](#) | [Information](#) | [Current petitions](#) | [Petition](#)

petition details

Categories in Council, government and democracy

[Calendar](#)

[What's new](#)

[Search](#)

[Committees](#)

[Decisions including Member Decisions](#)

James Ward CGR

[Meetings](#)

St [Forward Plans](#)

[Councillors](#)

[Library](#)

[epetitions](#)

[Subscribe to updates](#)

- [Browse all current petitions](#)

We the undersigned petition the council to support the creation of a parish council in the St James Ward as identified on the St James Ward map attached to the Community Governance Review page of the Northampton Borough Council website, and would like Northampton Borough Council to consult on this proposal in its review of community governance in the town.

This petition has been set up by Cllr Suresh Patel

This ePetition ran from 29/02/2012 to 18/05/2012 and has now finished.

373 people signed this ePetition.

Council response

When we have received the threshold number of signatures, Council will consider approving the proposal to go to a referenda in November 2012.

Threshold 372

Information on Council, government and democracy

[6 ways to search this website](#)

[Council - general information](#)

- [Related FAQs](#)
- [Related Forms](#)
- [Related Downloads](#)

- [Print this page](#)
- [Email this to a friend](#)

[Contact the Council](#)

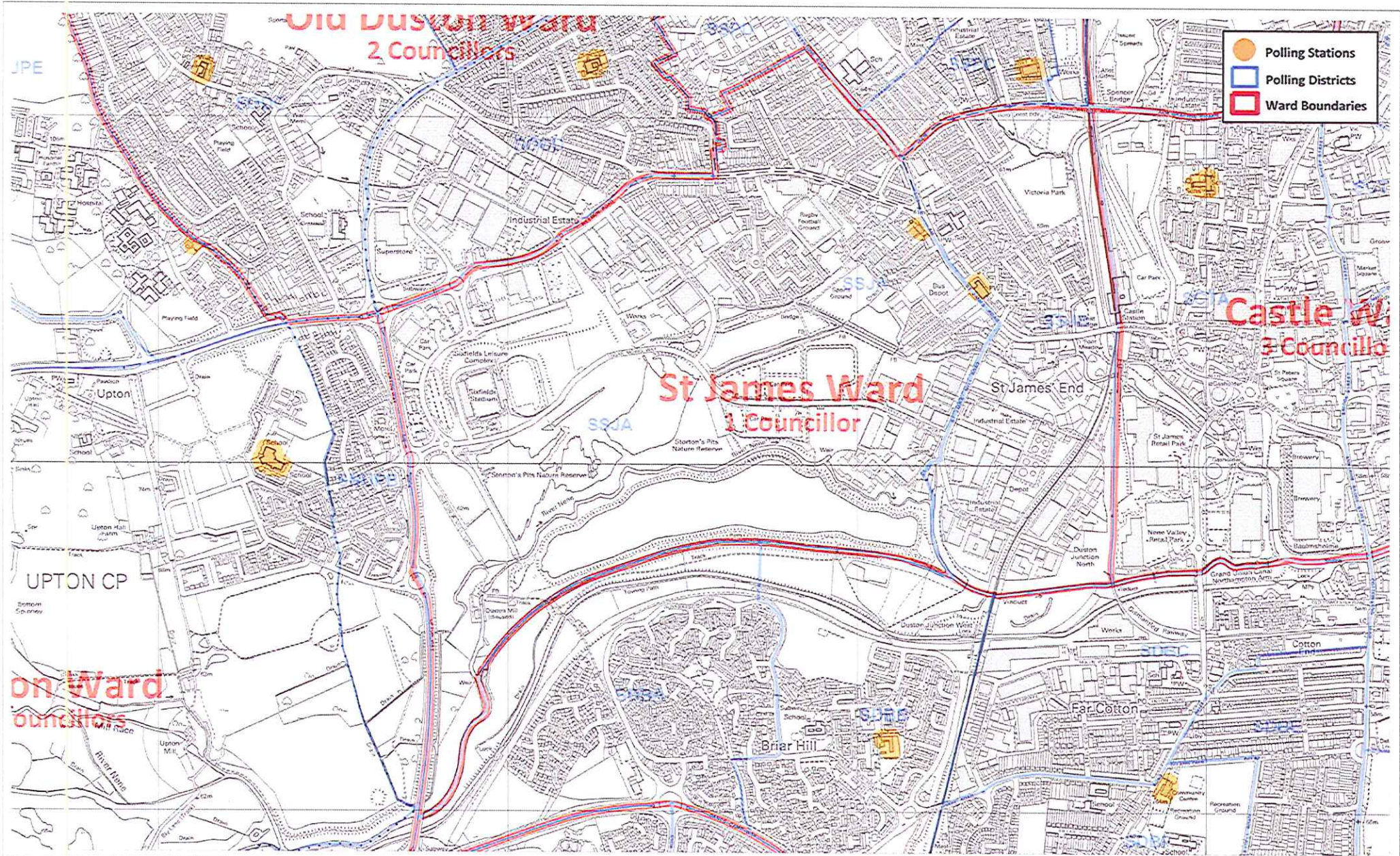
Email: enquiries@northampton.gov.uk

Telephone: 01604 837837

Use our **feedback form** or find key **contact details** and numbers.

All content © 2005 Northampton Borough Council | [Feedback](#)

Northampton Borough Council, The Guildhall, St Giles Square, Northampton NN1 1DE



Name: M.Dunne
 Date: 5th October 2010
 Scale: NTS
 Dept: GIS Development Unit
 Project: Ward Map

Title
St James Ward

Produced from the 2010 Ordnance Survey mapping with the permission of the Controller of Her Majesty's Stationery Office. © Crown Copyright
 Unauthorised reproduction infringes Crown Copyright and may lead to prosecution or civil proceedings. Licence number: 100019655

NORTHAMPTON BOROUGH COUNCIL

[Text only](#) | [Accessibility](#) | [Site map](#) | [Advanced Search](#)

Search

Monday 11 June 2012

[» Home](#) | [Information](#) | [Current ePetitions](#) | [Petition](#)

ePetition details

Categories in Council, government and democracy

[Calendar](#)

[What's new](#)

[Search](#)

[Committees](#)

[Decisions including Member Decisions](#)

Hunsbury Meadow CGR

[Meetings](#)
[Forward Plans](#)
[Councillors](#)
[Library](#)
[ePetitions](#)
[Subscribe to updates](#)

- o [Browse all current ePetitions](#)

We the undersigned petition the council to support the creation of a parish council in the Hunsbury Meadow area of Upton Ward as identified on the attached map on the [Community Governance Review page of the Northampton Borough Council website](#), and would like Northampton Borough Council to consult on this proposal in its review of community governance in the town.

This petition has been set up by Owen Coop. email owencoop@sky.com

This ePetition ran from 24/04/2012 to 18/05/2012 and has now finished.

255 people signed this ePetition.

Council response

When we have received the threshold number of signatures of 250, Council will consider approving the proposal to go to a referenda in November 2012.

Information on Council, government and democracy
[6 ways to search this website](#)

[Council - general information](#)

- [Related FAQs](#)
- [Related Forms](#)
- [Related Downloads](#)

- [Print this page](#)
 - [Email this to a friend](#)
- [Contact the Council](#)

Email: enquiries@northampton.gov.uk

Telephone: 01604 837837

Use our [feedback form](#) or find key [contact details](#) and numbers.

All content © 2005 Northampton Borough Council | [Feedback](#)




Northampton Borough Council, The Guildhall, St Giles Square, Northampton NN1 1DE

Proposed Hunsbury Meadow CP

NORTH AMPTON PARISH COUNCIL

DRAWN BY: BUSINESS DEV. DATE: 23/04/12 SCALE: 1:6,000 @ A1

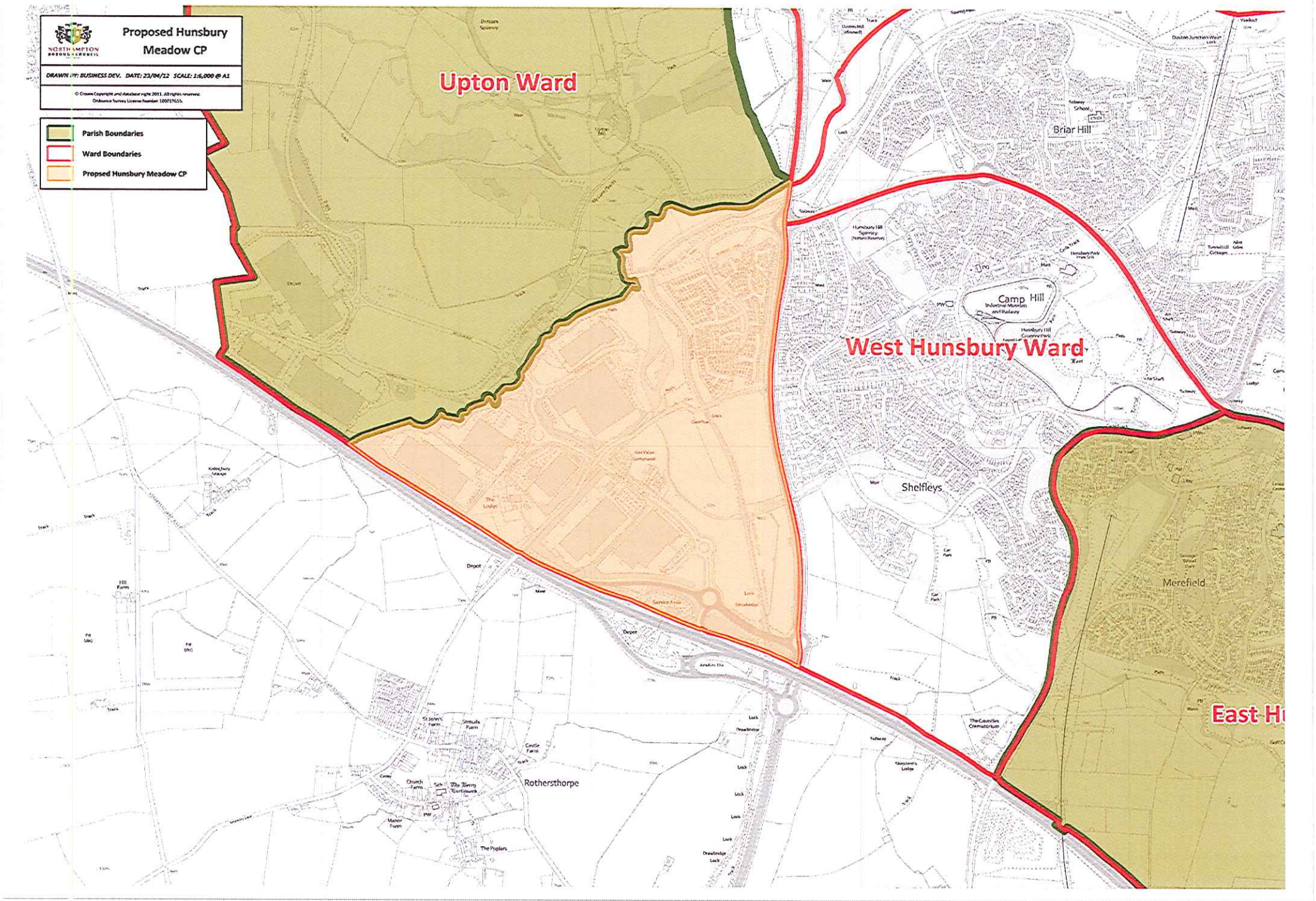
© Crown Copyright and database right 2011. All rights reserved.
Ordnance Survey License Number: 100019055.

-  Parish Boundaries
-  Ward Boundaries
-  Proposed Hunsbury Meadow CP

Upton Ward

West Hunsbury Ward

East Hunsbury Ward



[Text only](#) | [Accessibility](#) | [Site map](#) | [Advanced Search](#)

Search

Monday 11 June 2012

» [Home](#) | [Information](#) | [Current petitions](#) | [Petition](#)

petition details

Categories in Council, government and democracy

[Calendar](#)

[What's new](#)

[Search](#)

[Committees](#)

[Decisions including Member Decisions](#)

[Castle Ward CGR](#)

[Meetings](#)

[Forward Plans](#)

[Councillors](#)

[Library](#)

[ePetitions](#)

[Subscribe to updates](#)

- o [Browse all current petitions](#)

We the undersigned petition the council to support the creation of a parish council in the Castle Ward as identified on the Castle Ward map attached to the Community Governance Review page of the Northampton Borough Council website, and would like Northampton Borough Council to consult on this proposal in its review of community governance in the town.

This petition has been set up by Primrose Landstowne

This petition ran from 25/04/2012 to 18/05/2012 and has now finished.

Nobody signed this petition.

Council response

When we have received the threshold number of signatures, Council will consider approving the proposal to go to a referenda in November 2012.

Threshold 960

Information on Council, government and democracy

[6 ways to search this website](#)

[Council - general information](#)

- o [Related FAQs](#)
- o [Related Forms](#)
- o [Related Downloads](#)

- o [Print this page](#)
- o [Email this to a friend](#)

[Contact the Council](#)

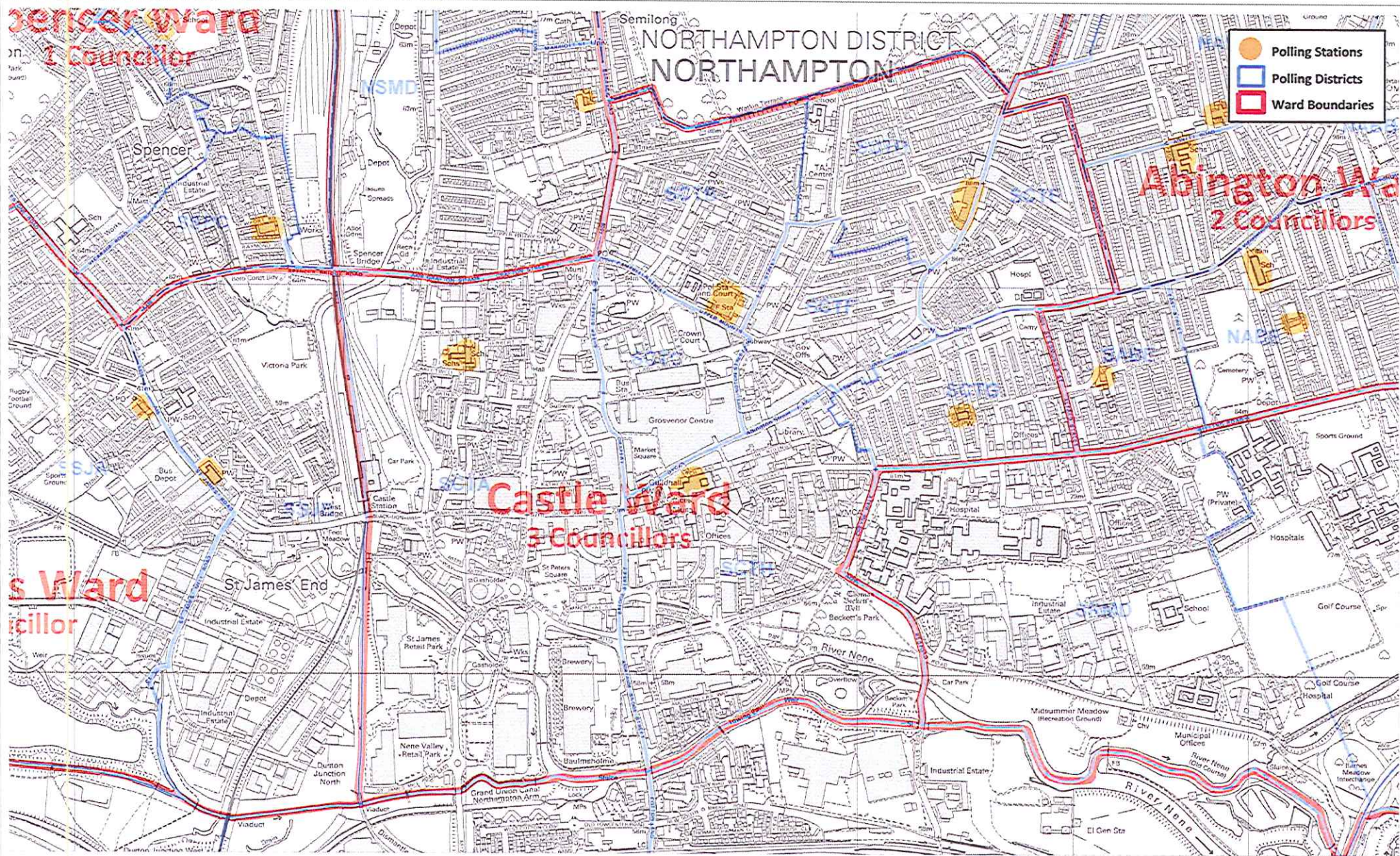
Email: enquiries@northampton.gov.uk

Telephone: 01604 837837

Use our [feedback form](#) or find key [contact details](#) and numbers.

All content © 2005 Northampton Borough Council | [Feedback](#)

Northampton Borough Council, The Guildhall, St Giles Square, Northampton NN1 1DE



Name: M.Dunne
 Date: 29th September 2010
 Scale: NTS
 Dept: GIS Development Unit
 Project: Ward Map

Title
Castle Ward

Produced from the 2010 Ordnance Survey mapping with the permission of the Controller of Her Majesty's Stationery Office. © Crown Copyright
 Unauthorised reproduction infringes Crown Copyright and may lead to prosecution or civil proceedings. Licence number: 100019655

[Text only](#) | [Accessibility](#) | [Site map](#) | [Advanced Search](#)

Search

Monday 11 June 2012

[» Home](#) | [Information](#) | [Current petitions](#) | [Petition](#)

petition details

Categories in Council, government and democracy
[Calendar](#)

[What's new](#)

[Search](#)

[Committees](#)

[Decisions including Member Decisions](#)

Phippsville Ward CGR

[Meetings](#)

[Forward Plans](#)

[Councillors](#)

[Library](#)

[petitions](#)

[Subscribe to updates](#)

- o [Browse all current petitions](#)

We the undersigned petition the council to support the creation of a parish council in the Phippsville Ward as identified on the Phippsville Ward map attached to the Community Governance Review page of the Northampton Borough Council website, and would like Northampton Borough Council to consult on this proposal in its review of community governance in the town

This petition has been set up by Cllr Anna King.

This ePetition ran from 11/05/2012 to 18/05/2012 and has now finished.

2 people signed this ePetition.

Council response

When we have received the threshold number of signatures, Council will consider approving the proposal to go to a referenda in November 2012.

Threshold 327

Information on Council, government and democracy

[6 ways to search this website](#)

[Council - general information](#)

- o [Related FAQs](#)
- o [Related Forms](#)
- o [Related Downloads](#)

- o [Print this page](#)
- o [Email this to a friend](#)

[Contact the Council](#)

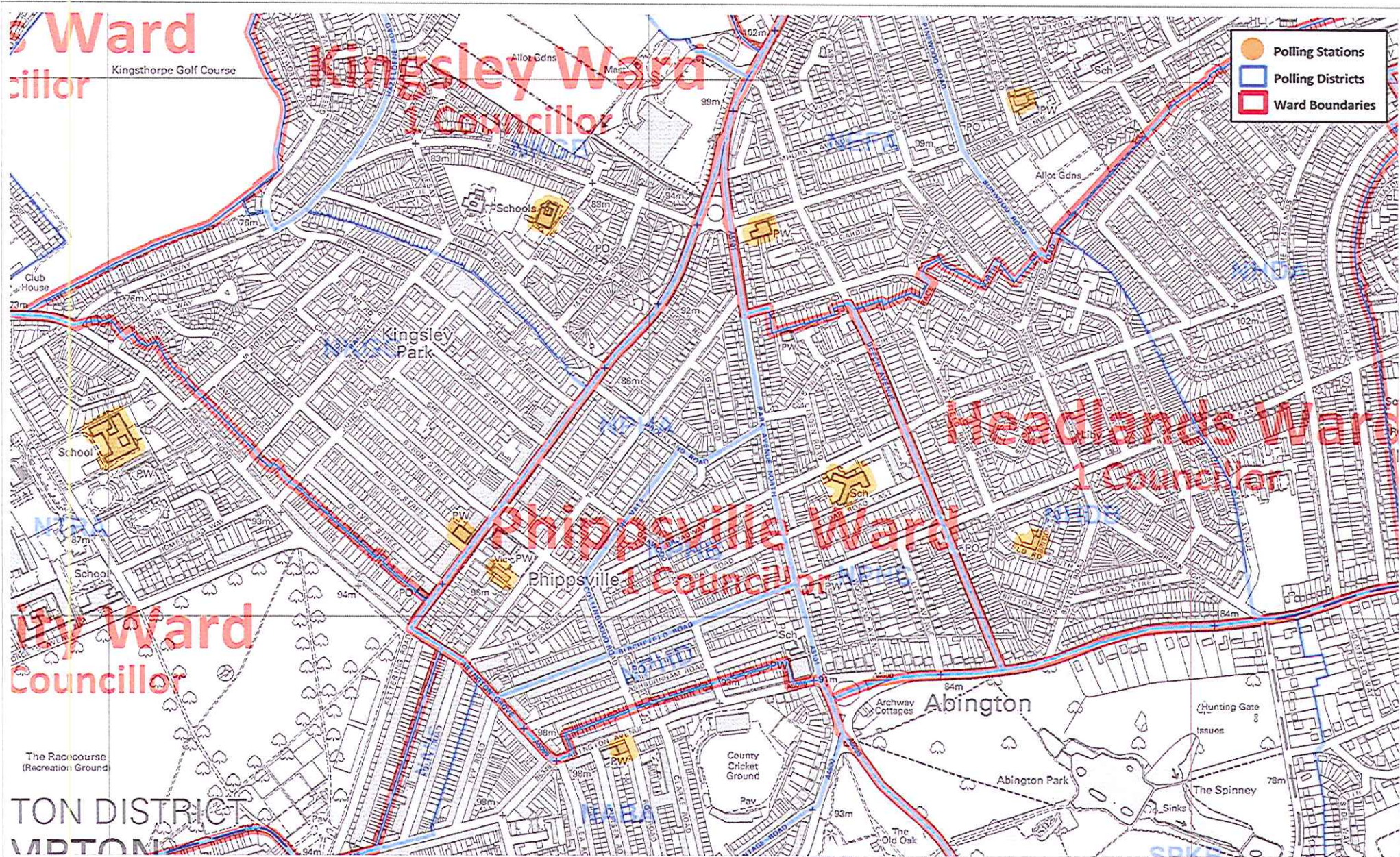
Email: enquiries@northampton.gov.uk

Telephone: 01604 837837

Use our **feedback form** or find key **contact details** and numbers.

All content © 2005 Northampton Borough Council | [Feedback](#)

Northampton Borough Council, The Guildhall, St Giles Square, Northampton NN1 1DE



Name: M.Dunne
 Date: 29th September 2010
 Scale: NTS
 Dept: GIS Development Unit
 Project: Ward Map

Title
Phippsville Ward

Produced from the 2010 Ordnance Survey mapping with the permission of the Controller of Her Majesty's Stationery Office. © Crown Copyright
 Unauthorised reproduction infringes Crown Copyright and may lead to prosecution or civil proceedings. Licence number: 100019655

[Text only](#) | [Accessibility](#) | [Site map](#) | [Advanced Search](#)

Search

Monday 11 June 2012

[» Home](#) | [Information](#) | [Current ePetitions](#) | [Petition](#)

ePetition details

Categories in Council, government and democracy

[Calendar](#)

[What's new](#)

[Search](#)

[Committees](#)

[Decisions including Member Decisions](#)

Kingsthorpe Ward CGR

[Meetings](#)

[Forward Plans](#)

[Councillors](#)

[Library](#)

[ePetitions](#)

[Subscribe to updates](#)

- o [Browse all current ePetitions](#)

We the undersigned petition the council to support the creation of a parish council in the Kingsthorpe Ward as identified on the Kingsthorpe Ward map attached to the Community Governance Review page of the Northampton Borough Council website, and would like Northampton Borough Council to consult on this proposal in its review of community governance in the town.

This petition has been set up by Cllr Sally Beardsworth

This ePetition ran from 24/04/2012 to 18/05/2012 and has now finished.

Nobody signed this ePetition.

Council response

When we have received the threshold number of signatures, of 374,

Council will consider approving the proposal to go to a referendum in November 2012

Information on Council, government and democracy
[6 ways to search this website](#)

[Council - general information](#)

- o [Related FAQs](#)
- o [Related Forms](#)
- o [Related Downloads](#)

- o [Print this page](#)
- o [Email this to a friend](#)

[Contact the Council](#)

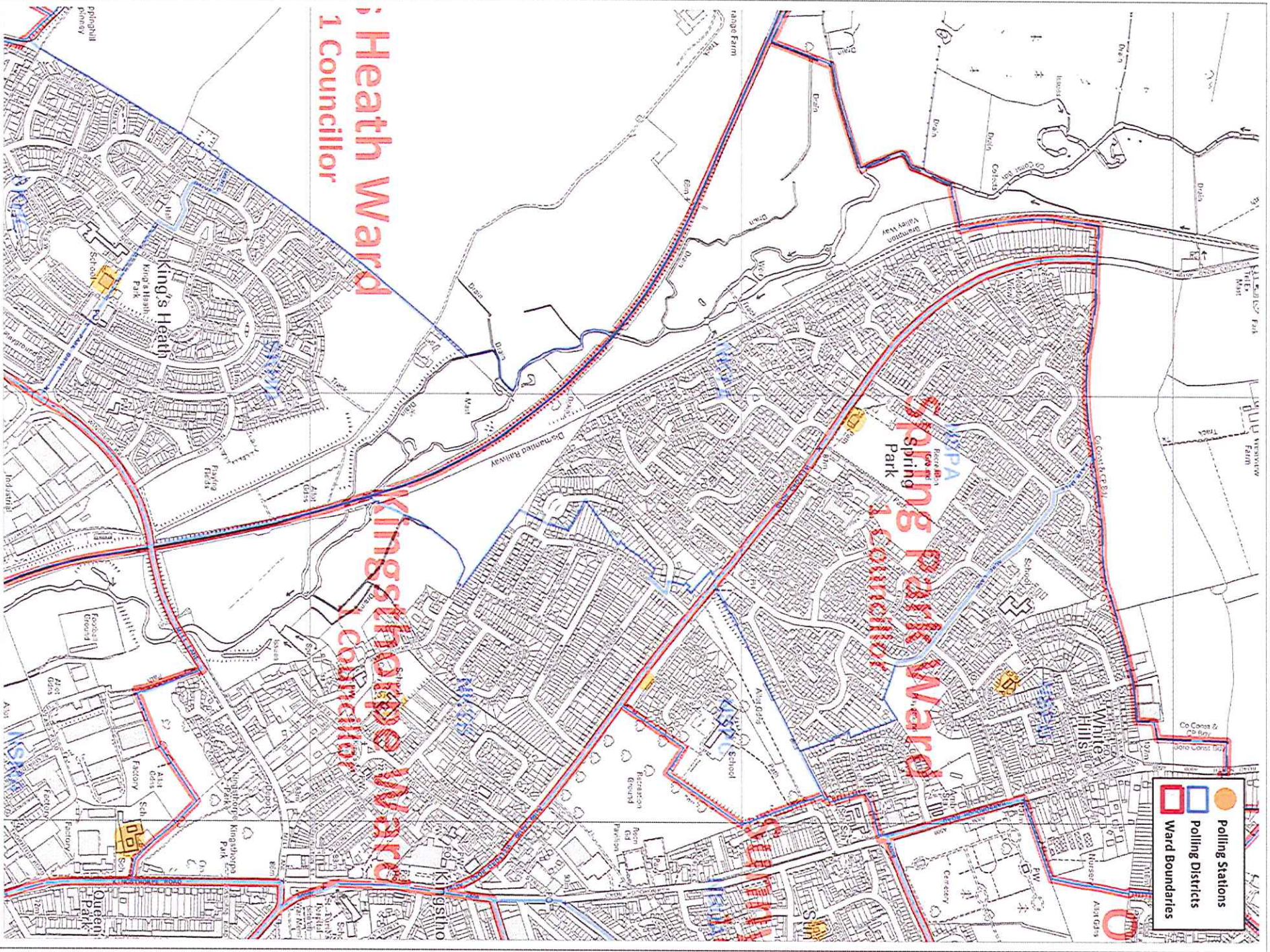
Email: enquiries@northampton.gov.uk

Telephone: 01604 837837

Use our [feedback form](#) or find key [contact details](#) and numbers.

All content © 2005 Northampton Borough Council | [Feedback](#)

Northampton Borough Council, The Guildhall, St Giles Square, Northampton NN1 1DE



Heath Ward
1 Councillor

Kingsthorpe Ward
1 Councillor

Spring Park Ward
1 Councillor

- Polling Stations
- Polling Districts
- Ward Boundaries



Name: M.Dunne
Date: 29th September 2010
Scale: NTS
Dept: GIS Development Unit
Project: Ward Map

Title
Kingsthorpe Ward

Produced from the 2010 Ordnance Survey mapping with the permission of the Controller of Her Majesty's Stationery Office. © Crown Copyright
Unauthorised reproduction infringes Crown Copyright and may lead to prosecution or civil proceedings. Licence number: 100019055

PROPOSAL WITHDRAWN

NORTHAMPTON BOROUGH COUNCIL

[Text only](#) | [Accessibility](#) | [Site map](#) | [Advanced Search](#)

Search

Monday 11 June 2012

[» Home](#) | [Information](#) | [Current petitions](#) | [Petition](#)

petition details

Categories In Council, government and democracy

[Calendar](#)

[What's new](#)

[Search](#)

[Committees](#)

[Decisions including Member Decisions](#)

Upton Parish Expansion (Banbury Lane) CGR

[Meetings](#)

[Forward Plans](#)

[Councillors](#)

[Library](#)

[ePetitions](#)

[Subscribe to updates](#)

- o [Browse all current petitions](#)

We the undersigned petition the council to support the creation of an expanded Upton Parish Council to include the Banbury Lane area of Northampton as identified on the attached map on the [Community Governance Review page of the Northampton Borough Council website](#), and would like [Northampton Borough Council to consult on this proposal in its review of community governance in the town](#).

This petition has been set up by Cllr Brian Sargeant

This petition ran from 25/04/2012 to 18/05/2012 and has now finished.

Nobody signed this ePetition.

Council response

When we have received the threshold number of signatures, Council will consider approving the proposal to go to a referenda in November 2012.

The Threshold is 403.

Information on Council, government and democracy

[6 ways to search this website](#)

[Council - general information](#)

- o [Related FAQs](#)
- o [Related Forms](#)
- o [Related Downloads](#)

- o [Print this page](#)
- o [Email this to a friend](#)

[Contact the Council](#)

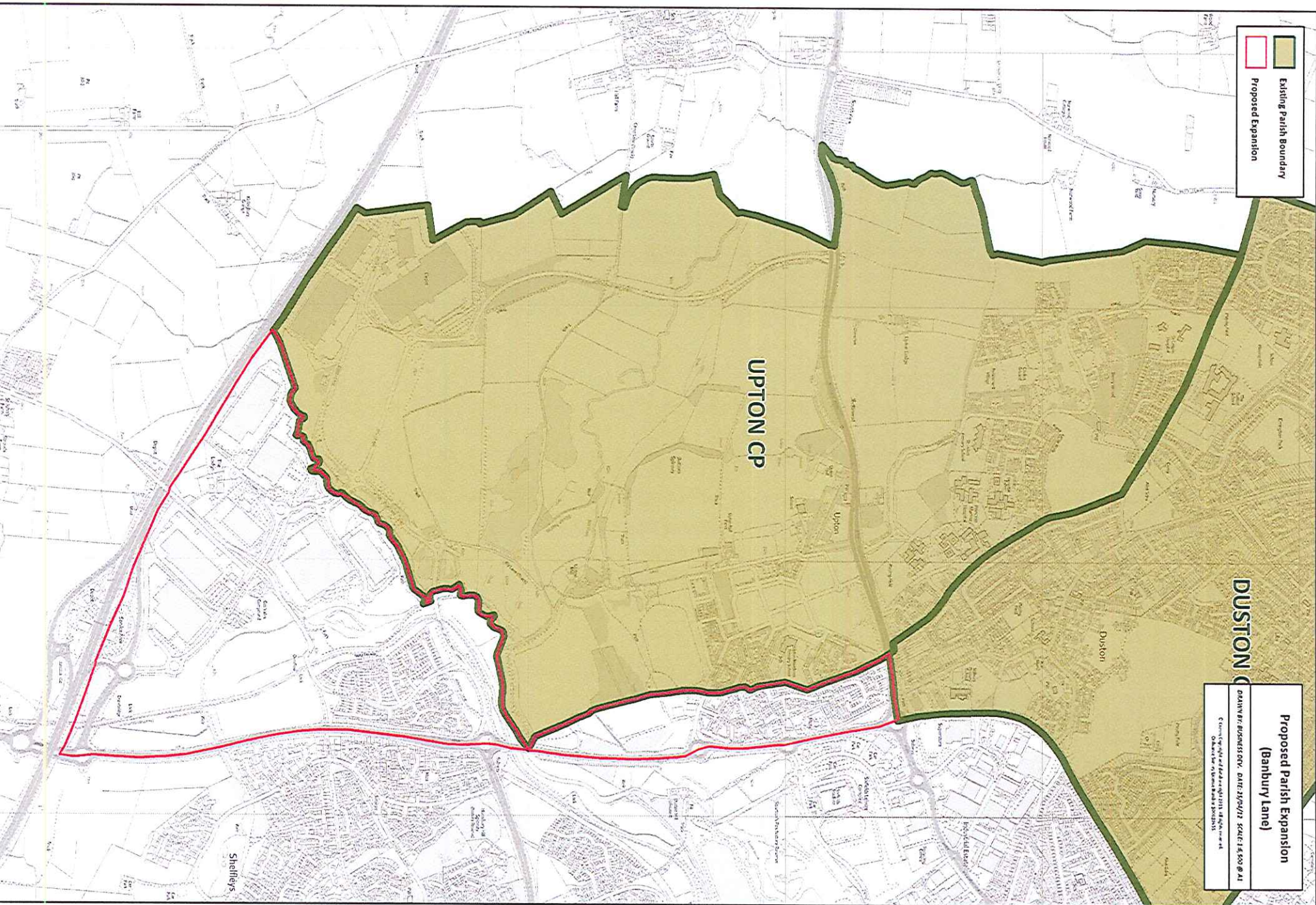
Email: enquiries@northampton.gov.uk

Telephone: 01604 837837

Use our [feedback form](#) or find key [contact details](#) and numbers.

All content © 2005 Northampton Borough Council | [Feedback](#)

Northampton Borough Council, The Guildhall, St Giles Square, Northampton NN1 1DE



Existing Parish Boundary
Proposed Expansion

**Proposed Parish Expansion
(Banbury Lane)**
DRAWN BY: BUSINESS DEV. DATE: 27/04/17 SCALE: 1:500 @ A1
© Crown Copyright and Geo Information 2016. All rights reserved.
Observed from Ordnance Survey 2016/17